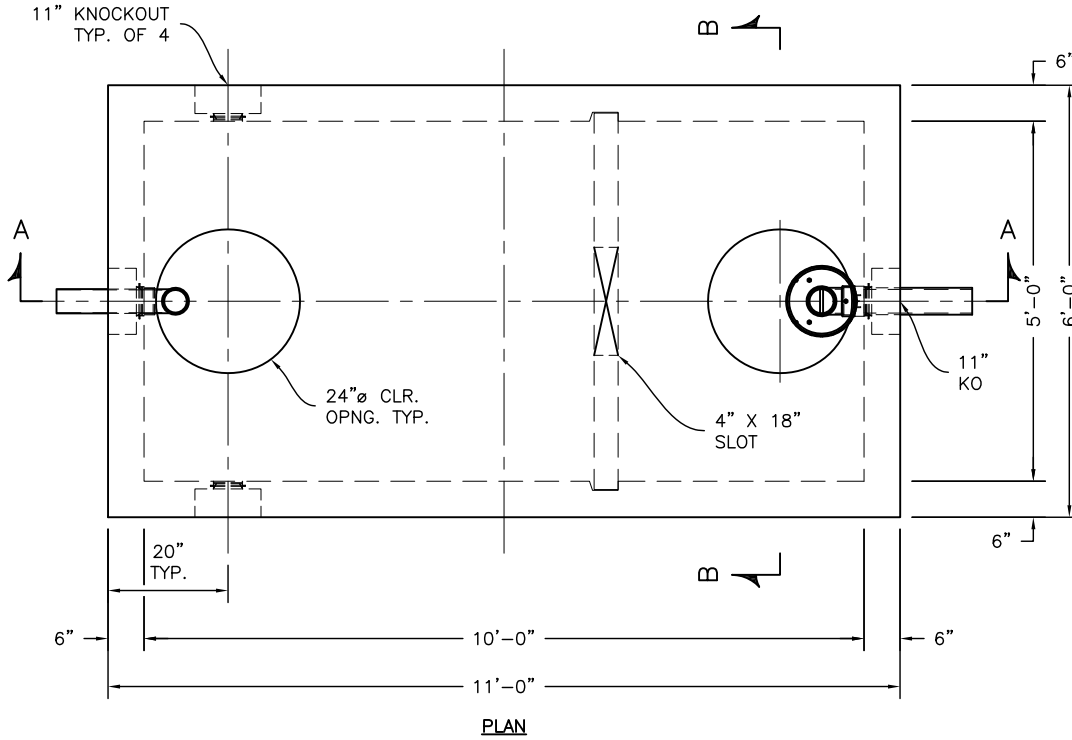
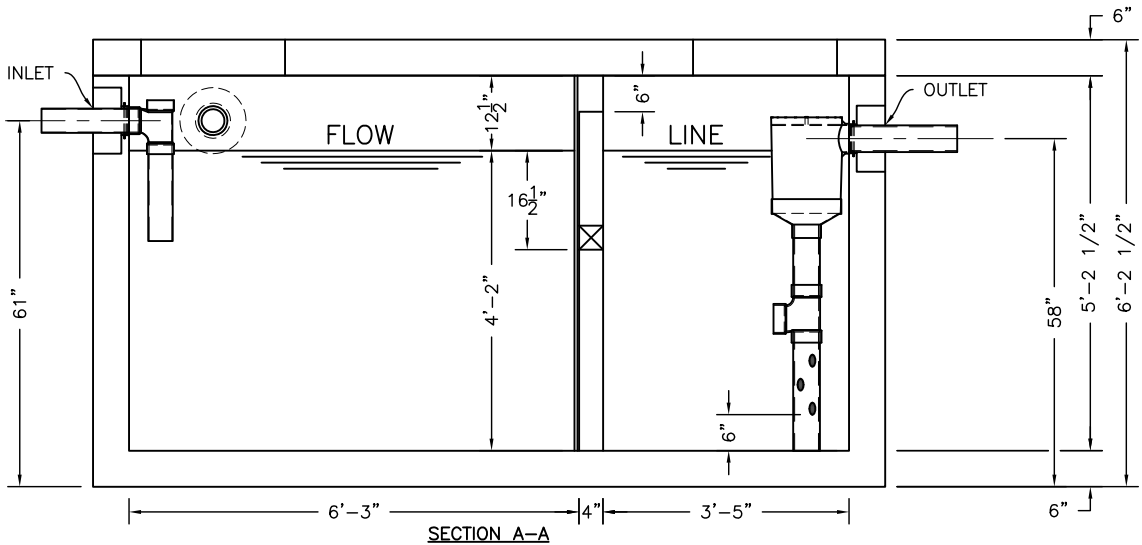


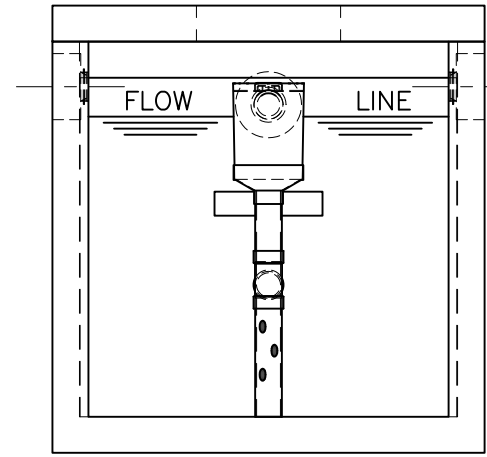
O:\Drawings\Product Workbooks\024-SquareRectangular-05x10-60X120\Septic-Grease-Oil-Holding-Pump-StormPro\ST-5X10-T-N-0.dwg



PLAN



SECTION A-A



SECTION B-B

**SP-7A**  
**SPECIFICATIONS:**  
 CONCRETE: 6,500 P.S.I. @ 28 DAYS.  
 ENTRAINED AIR: 5% - 8%.  
 STEEL: A.S.T.M. A496-A615  
 GRADE 60-80 KSI.  
 ACI 318-99 TRAFFIC. USE ACI LOAD FACTORS.  
 A.A.S.H.T.O. METHOD OF DESIGN. EQUIVALENT  
 SOIL PRESSURE OF 40 (PCF).  
**DESIGN LOADING:**  
 LIVE LOAD: H2O.  
 EARTH FILL: 0 TO 6'.  
 WATER TABLE: 3' BELOW GRADE.  
**PIPING:** TEES, DROP LEGS & FITTINGS SUPPLIED & INSTALLED  
 BY CONTR. CONTR. TO DRILL MIN. 6-2" HOLES BELOW  
 TEE FITTING, STARTING 6" OFF FLOOR.

**FRAME & COVER & RISERS:** SEE DWG. #ST-HDTRSRS - "TRAFFIC TANK RISERS".

**WEIGHT:**  
 TOP SLAB: 4,423 LBS.  
 BOTTOM SECTION & BAFFLE WALL: 18,197 LBS.  
 TOTAL: 22,620 LBS.

WATERTIGHT ASSEMBLY IS THE RESPONSIBILITY OF THE INSTALLING CONTRACTOR. ASK FOR KISTNER "WATERTIGHT JOINT INSTALLATION" DETAIL.

- PIPE OPENINGS STOCK:**
- PIPE SEALS REQUIRED
  - 4" PVC - OPENING WITH SEAL - STOCK
  - 6" PVC - OPENING STOCK - SEAL TO BE INSTALLED
  - 8" PVC - OPENING STOCK - SEAL TO BE INSTALLED
  - GROUTED OPENINGS ONLY - REQUIRED
  - 4" PVC - OPENING WITH SEAL - STOCK
  - 6" PVC - STOCK KNOCKOUT TO BE BROKEN OUT BY CONTRACTOR
  - 8" PVC - STOCK KNOCKOUT TO BE BROKEN OUT BY CONTRACTOR

FOR RISER, FRAME, AND COVER: SEE "TRAFFIC TANK EXTENSIONS"



**KISTNER CONCRETE PRODUCTS INC.**  
 8713 READ ROAD  
 E. PEMBROKE, N.Y.  
 14056  
 (716) 894-2267

**PRODUCT DESIGNATION**  
**1500 GALLON "K-SEP" GREASE INTERCEPTOR TRAFFIC - NEW**

**DWG. NO.**  
**GI-1500-T-N-0**  
 12/13/16

