



KISTNER CONCRETE PRODUCTS INC.  
8713 READ ROAD  
E. PEMBROKE, N.Y.  
14056  
(716) 894-2267

PRODUCT DESIGNATION

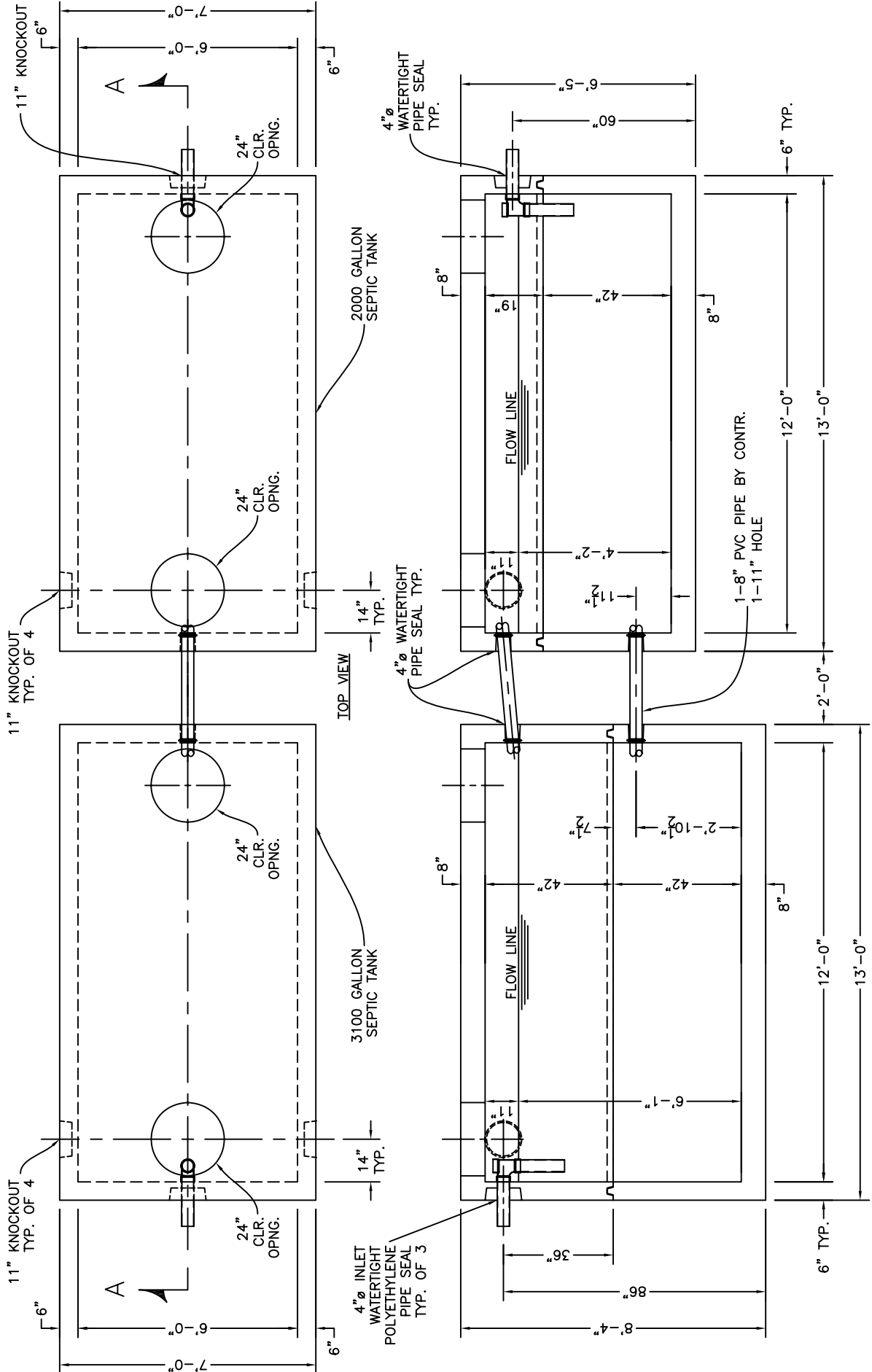
5100 GALLON SEPTIC TANK-90/TRAFFIC

DWG. NO.

ST-ST510090-T ©

1-22-07

- SP-7 SPECIFICATIONS:  
CONCRETE: 5,000 P.S.I. @ 28 DAYS.  
ENRAINED AIR: 5% - 9%  
STEEL: A.S.T.M. A496-A615  
GRADE 60-60 KSI  
ACI 318-99 TRAFFIC.  
DESIGN LOADING: USE ACI LOAD FACTORS.  
A.A.S.H.T.O. METHOD OF DESIGN. EQUIVALENT SOIL PRESSURE OF 40 (PCF).  
H20.  
LIVE LOAD: 0 TO 6'.  
EARTH FILL: 3' BELOW GRADE.  
WATER TABLE:
- WEIGHT 3100: TOP: 20,704 LBS.  
BOTTOM: 22,000 LBS.  
TOTAL: 42,704 LBS.  
WEIGHT 2000: TOP: 16,712 LBS.  
BOTTOM: 22,000 LBS.  
TOTAL: 38,712 LBS.  
WEIGHT 5100: TOP: 81,416 LBS.  
BOTTOM: 22,000 LBS.  
TOTAL: 103,416 LBS.
- OPTIONAL ITEMS:  EFFLUENT FILTER  
 GAS DEFLECTOR



SECTION A-A