



KISTNER CONCRETE PRODUCTS INC.
8713 READ ROAD
E. PEMBROKE, N.Y.
14056
(716) 894-2267

PRODUCT DESIGNATION

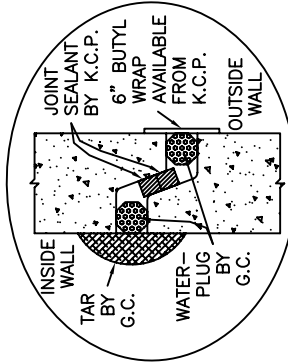
DWG. NO.

500 GALLON "K-SEP" GREASE INTERCEPTOR

GI-KSEP-GI500 ©

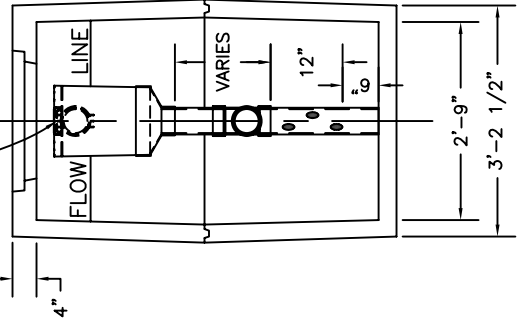
1-16-07

- SPECIFICATIONS:**
 CONCRETE: 4,000 P.S.I. @ 28 DAYS.
 ENTRAINED AIR: 5% - 9%.
 STEEL: A.S.T.M. A496-A615 GRADE 60-60 KSI.
 DESIGN LOADING: A-0.3/300PSF/WALKWAYS. FLOTATION FORCES NOT ACCOUNTED FOR.
 PIPING: OUTLET TEES, DROP LEGS & FITTINGS SUPPLIED & INSTALLED BY CONTR. CONTR. TO DRILL MIN. 6-2" HOLES BELOW TEE FITTING STARTING 6" OFF FLOOR.
 FRAME & COVER & RISERS: SEE DWG. #ST-NTTKRSR - "NON-TRAFFIC TANK RISERS".
 COVER OVER TANK: MAX. 3' OF EARTH FILL.
 WEIGHT: TOP SECTION: 2,847 LBS.
 BOTTOM SECTION: 2,513 LBS.
 TOTAL: 5,360 LBS.

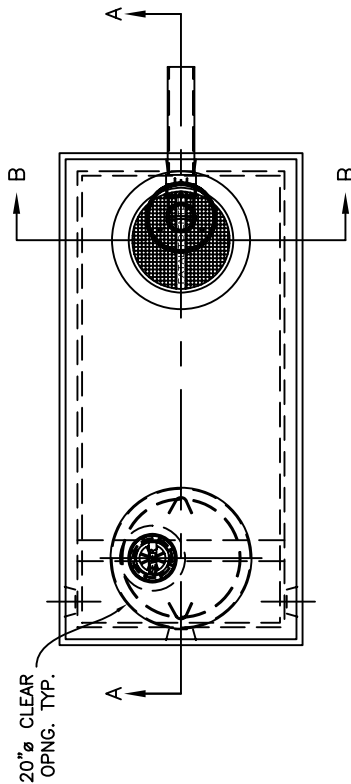


WATERTIGHT JOINT DETAIL
SCALE: N/A

- OPTIONAL A300 TERTIARY EFFLUENT POLISHING FILTER WITH EXTENSION (REMOVABLE FOR SERVICING)

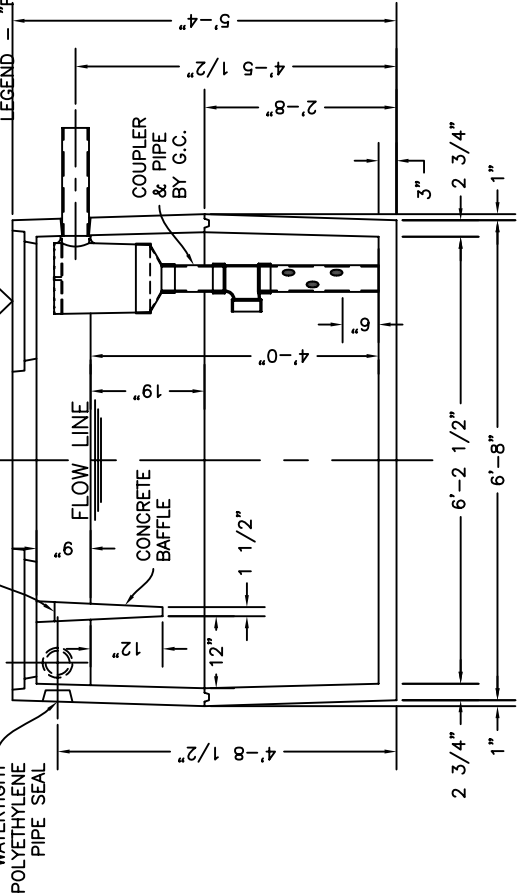


SECTION B-B



TOP VIEW

- STANDARD 20" COVER WITH 6" PVC COUPLER CAST IN WITH 6" SEWER VENT COVER ARE INCLUDED IF 18" DIA. FRAME & COVER ARE NOT USED
- OPTIONAL - (REQ'D IF EFFLUENT FILTER IS USED) 18" DIA. CAST IRON FRAME LOCKING & GASKETED LEGEND - "FATAL TO ENTER"
- 20" CLEAR OPNG. TYP.
- 6" CAST IRON SEWER VENT COVER
- STANDARD 6" S & D PIPE AVAILABLE IN 10' LENGTHS ONLY
- STANDARD 20" COVER WITH CAST-IN 6" S & D COUPLER
- 3" GAS VENT
- INLET 4" POLYETHYLENE PIPE SEAL
- FLOW LINE
- CONCRETE BAFFLE
- COUPLER & PIPE BY G.C.



SECTION A-A