



KISTNER CONCRETE PRODUCTS INC.
8713 READ ROAD
E. PEMBROKE, N.Y.
14056
(716) 894-2267

PRODUCT DESIGNATION

DWG. NO.

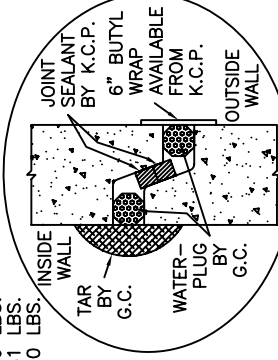
3100 GALLON "K-SEP" GREASE INTERCEPTOR

GI-KSEP-GI3100©

1-18-07

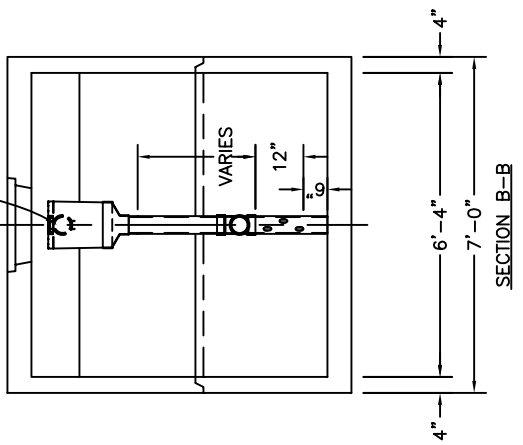
SPECIFICATIONS:
 CONCRETE: 4,000 P.S.I. @ 28 DAYS.
 ENTRAINED AIR: 5% - 9%.
 STEEL: A.S.T.M. A496-A615
 GRADE 60-60 KSI.
 DESIGN LOADING: A-0.3/300PSF/WALKWAYS. FLOTATION FORCES NOT ACCOUNTED FOR.
 PIPING: OUTLET TEES, DROP LEGS & FITTINGS SUPPLIED & INSTALLED BY CONTR. CONTR. TO DRILL MIN. 6-2" HOLES BELOW TEE FITTING STARTING 6" OFF FLOOR.
 FRAME & COVER & RISERS: SEE DWG. #ST-NITNKRSR - "NON-TRAFFIC TANK RISERS".
 COVER OVER TANK: MAX. 3' OF EARTH FILL.

WEIGHT:
 TOP SECTION: 16,829 LBS.
 BOTTOM SECTION: 14,581 LBS.
 TOTAL: 31,410 LBS.



WATERTIGHT JOINT DETAIL
SCALE: N/A

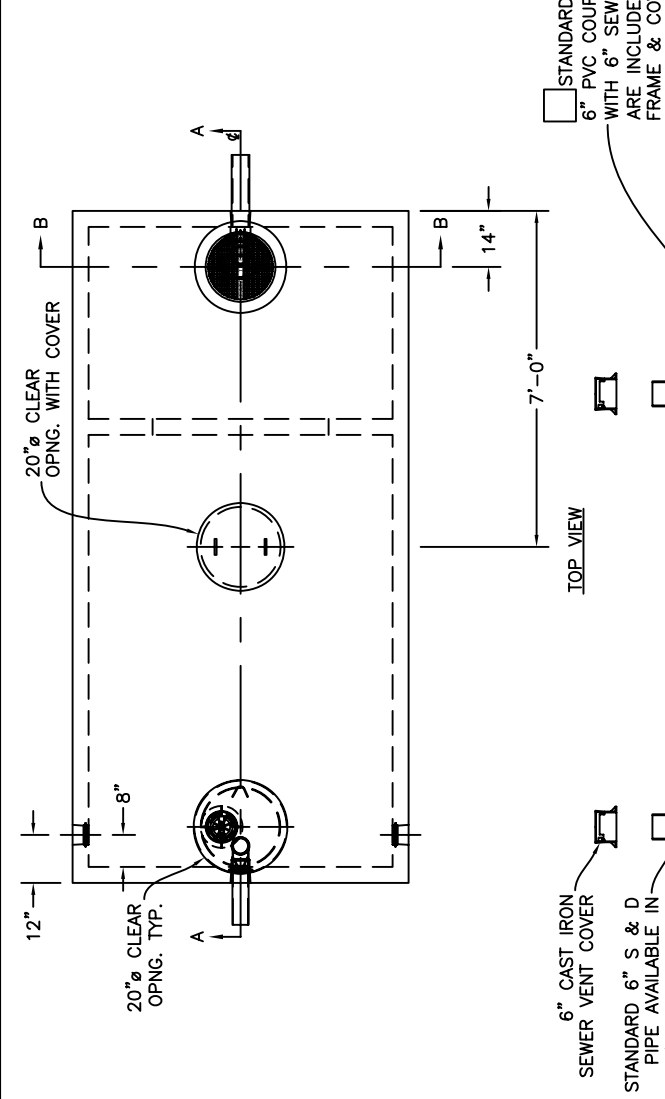
OPTIONAL A300 TERTIARY EFFLUENT POLISHING FILTER WITH EXTENSION (REMOVABLE FOR SERVICING)



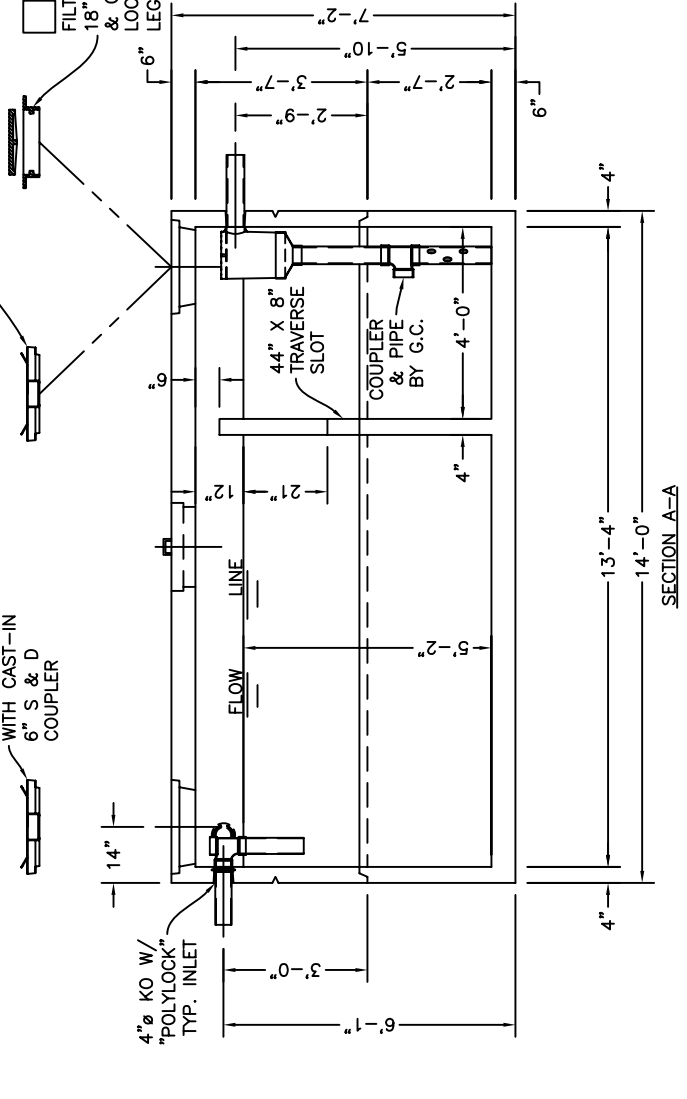
SECTION B-B

STANDARD 20" COVER WITH 6" PVC COUPLER CAST IN WITH 6" SEWER VENT COVER ARE INCLUDED IF 18" DIA. FRAME & COVER ARE NOT USED

OPTIONAL - (REQ'D IF EFFLUENT FILTER IS USED)
 18" DIA. CAST IRON FRAME & COVER LOCKING & GASKETED LEGEND - "FATAL TO ENTER"



TOP VIEW



SECTION A-A