

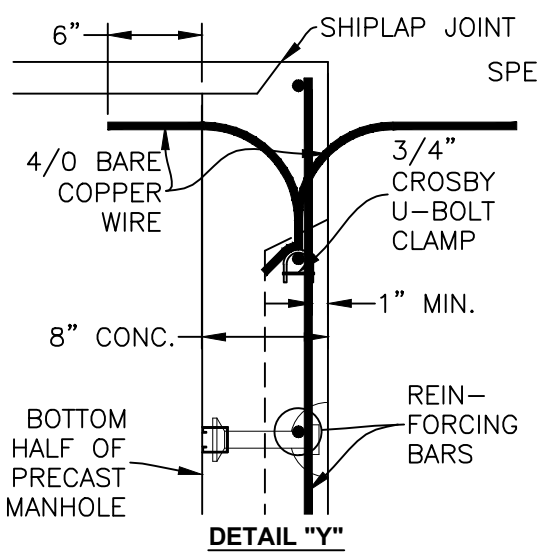
TABLE OF UNITS - ELECTRICAL MANHOLE			
MARK	QTY	VOL (yd ³)	WT (lbs.)
BOTTOM SECTION	1	5.673	22,525
RISER	1	3.518	14,060
TOP SLAB	1	2.964	11,880

APX PIECE WT.: CONCRETE + 10% FACTOR OF SAFETY. WEIGHTS ARE APPROXIMATE.

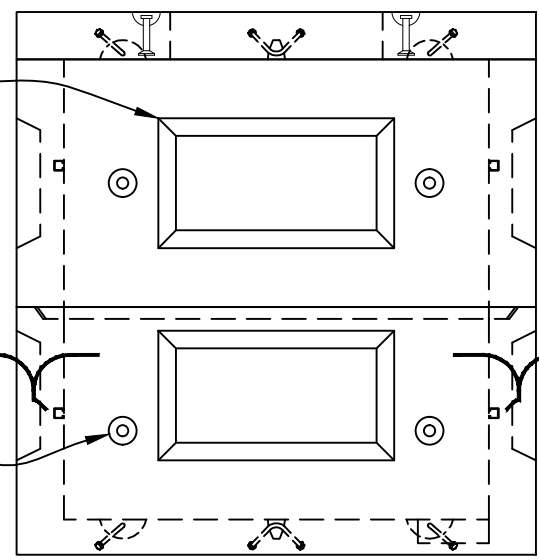
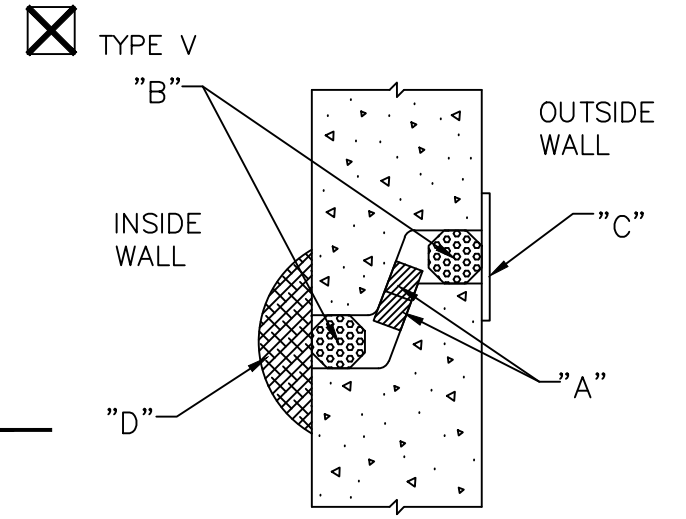
GROUND WIRE SEE DETAIL "Y" AS CLOSE TO JOINT AS POSSIBLE TYP. OF 2

18" X 31" KO 4" DEEP WITH 2" DRAFT 8 TOTAL PER SECTION TYP.

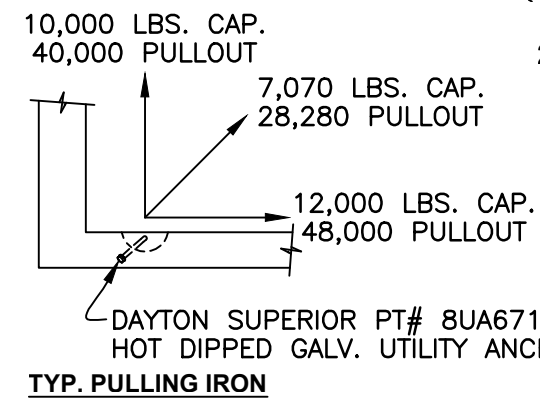
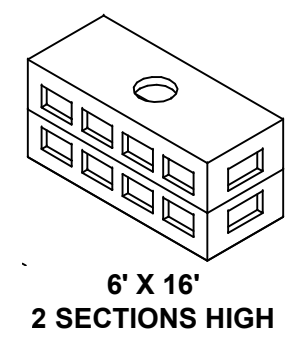
8 TON X 6 3/4" SWIFT LIFT PINS (4) LOCS. PER SECTION TYP.



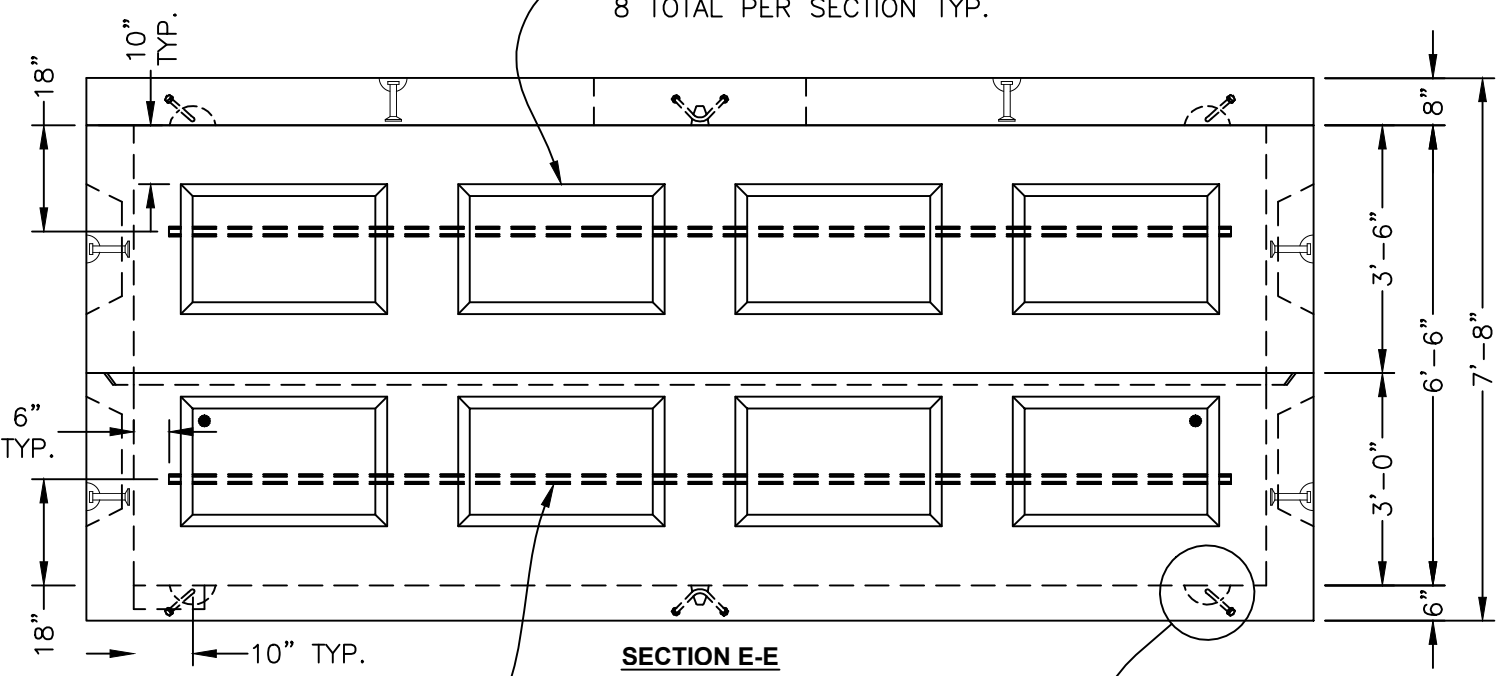
SPECIFICATIONS:
 CONCRETE: 6,500 P.S.I. @ 28 DAYS.
 ENTRAINED AIR: 5% - 9%.
 STEEL: A.S.T.M. A496-A615 GRADE 60-60 KSI.
 DESIGN LOADING: A.A.S.H.T.O. HS-25-44 WITH 30% IMPACT AND EQUIVALENT SOIL PRESSURE OF 130 (PCF). FLOTATION FORCES NOT ACCOUNTED FOR.
 COVER: 0 - 2'.
 WATER TABLE: 3' BELOW GRADE.



SECTION F-F



DAYTON SUPERIOR PT# 8UA671 HOT DIPPED GALV. UTILITY ANCHOR TYP. PULLING IRON



SECTION E-E

UNISTRUT- 1 5/8" x 1 3/8" GALV. CONCRETE INSERT x 15' LONG - 6" IN FROM EA. END

PULLING IRON - TYP. OF 8

ELECTRICAL MH

REV. NO.	DATE	DESCRIPTION

PREPARED FOR: _____ ACCT # _____

JOB ID: _____
 DATE: 5/1/14 SHEET TITLE: 6'x16' ELECTRIC MH DETAILS AND ISO DRAWN BY: MAK
 SCALE: N.T.S. CK'D BY: MJK
 PROJECT: _____

KISTNER DWG NO: KCP-EMH-6x16 CONTRACT DWG NO: _____
 KISTNER SHT NO: _____ NYS DOT DWG NO: _____

KISTNER CONCRETE PRODUCTS, INC.
 5550 HINMAN ROAD
 LOCKPORT, NEW YORK 14094
 PHONE 716-434-6157
 PROPRIETARY INFORMATION
 ALL RIGHTS OF KISTNER CONCRETE PRODUCTS, INC.