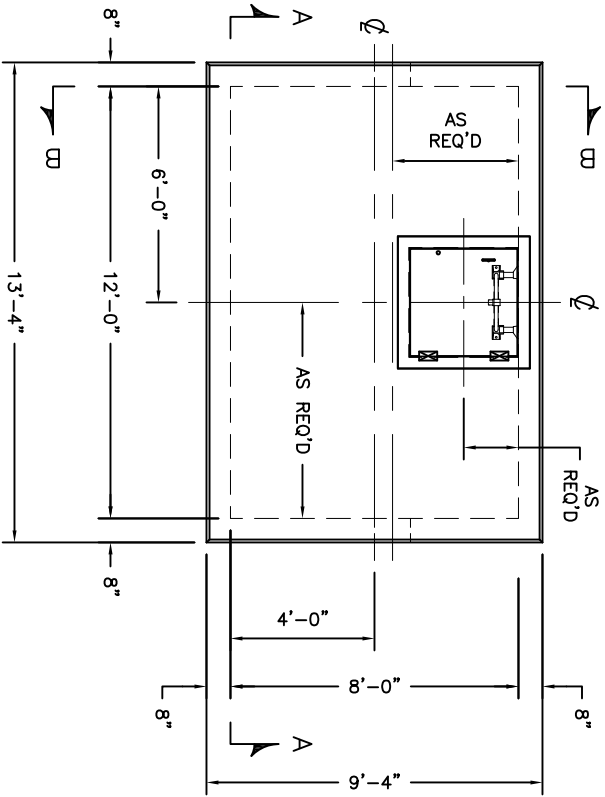


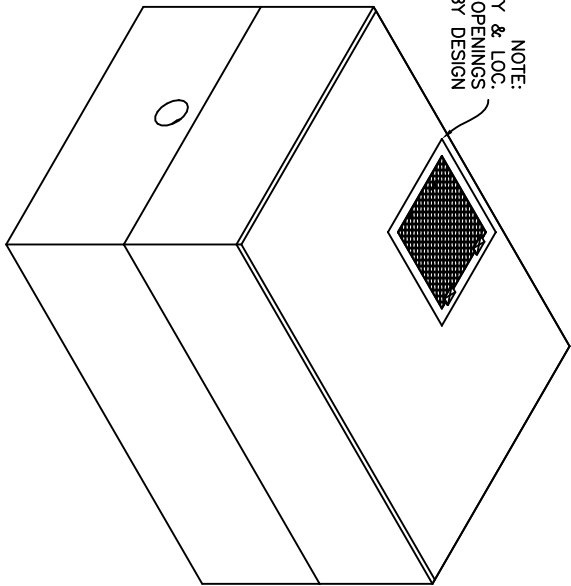
SP-7A
 SPECIFICATIONS:
 CONCRETE: 5,000 P.S.I. @ 28 DAYS.
 ENTRAINED AIR: 5% - 8%.
 STEEL: A.S.T.M. A496-A615
 GRADE 60-80 KSI.
 EPOXY COATED (IF REQ'D).
 ACI 318-99 TRAFFIC. USE ACI LOAD FACTORS.
 A.A.S.H.T.O. METHOD OF DESIGN. EQUIVALENT
 SOIL PRESSURE OF 40 (PCF).

LIVE LOAD:
 EARTH FILL:
 WATER TABLE:
 H2O.
 0 TO 3'
 AT GRADE.
 (STRUCTURAL)
 1' BELOW GRADE
 (BUOYANCY).

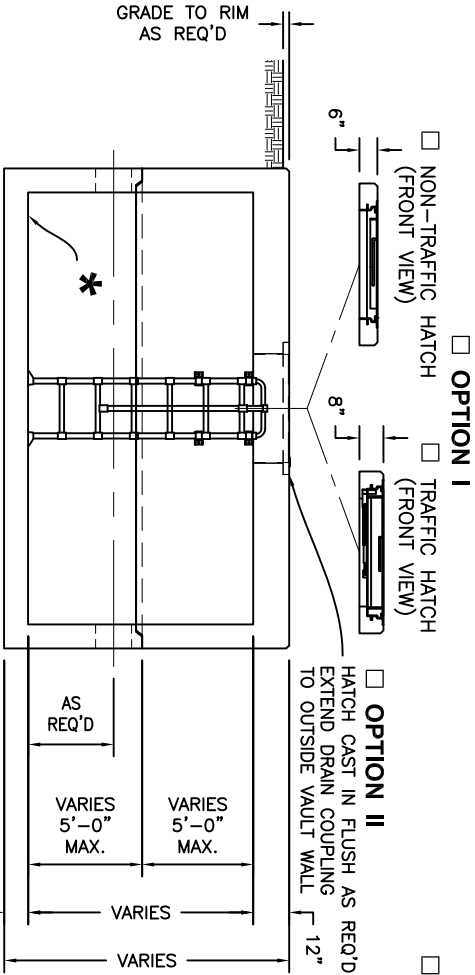
- HOLES - CONTRACTOR TO GROUT
 - WATERTIGHT BOOT SEAL
 - LINK SEAL WITH STEEL SLEEVE
 - LADDER ONLY
 - LADDER WITH INTEGRAL LADDER UP POST
 - LADDER WITH SEPARATE LADDER UP POST
- NOTE:
 TRAFFIC LOADED ALUMINUM HATCHES ARE NOT DESIGNED
 FOR PLACEMENT IN DELIBERATE TRAFFIC AREAS. IF REQUIRED -
 UPGRADE TO GALVANIZED STEEL.



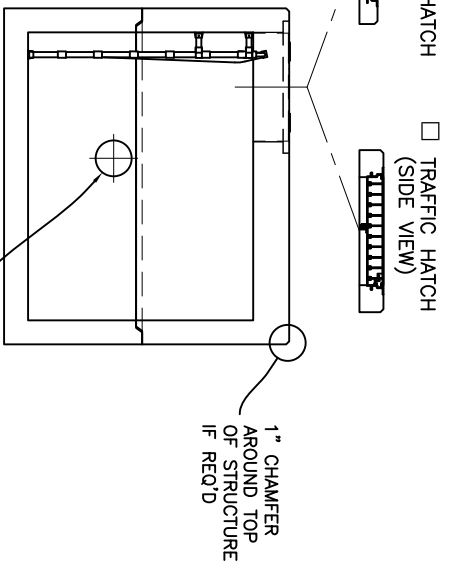
PLAN VIEW



NOTE:
 SIZE, QTY & LOC.
 OF TOP OPENINGS
 VARIES BY DESIGN



SECTION A-A



SECTION B-B

* CONTRACTOR TO POUR CAST-IN-PLACE CONCRETE INTO BASE TO CREATE
 SLOPED FLOOR AND TO CREATE SUMP IN CORNER, IF REQUIRED.



KISTNER CONCRETE PRODUCTS INC.
 8713 READ ROAD
 F. PEMBROKE, N.Y.
 14056
 (716) 894-2267

8'-0" X 12'-0" METER PIT

PRODUCT DESIGNATION

8X12MTPTCAT ©

DWG. NO.

3/10/16