



KISTNER CONCRETE PRODUCTS INC.  
8713 READ ROAD  
E. PEMBROKE, N.Y.  
14056  
(716) 894-2267

PRODUCT DESIGNATION

5000 GALLON OIL SEPARATOR – TRAFFIC

DWG. NO.

OS-OS5000T ©

2/20/07

SP-7A  
SPECIFICATIONS:  
CONCRETE: 5,000 P.S.I. @ 28 DAYS.  
5% – 8%  
ENRAINED AIR: A.S.T.M. A496-A615  
STEEL: GRADE 60-80 KSI.  
DESIGN LOADING: ACI 318-99 TRAFFIC. USE ACI LOAD FACTORS.  
A.A.S.H.T.O. METHOD OF DESIGN. EQUIVALENT SOIL PRESSURE OF 40 (PCF).

LIVE LOAD: H20.  
EARTH FILL: 0 TO 4'.  
WATER TABLE: 3' BELOW GRADE.

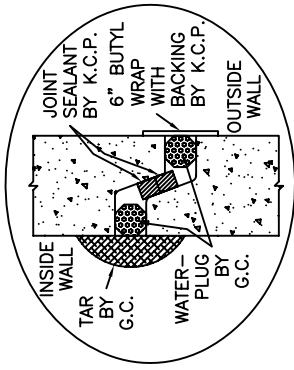
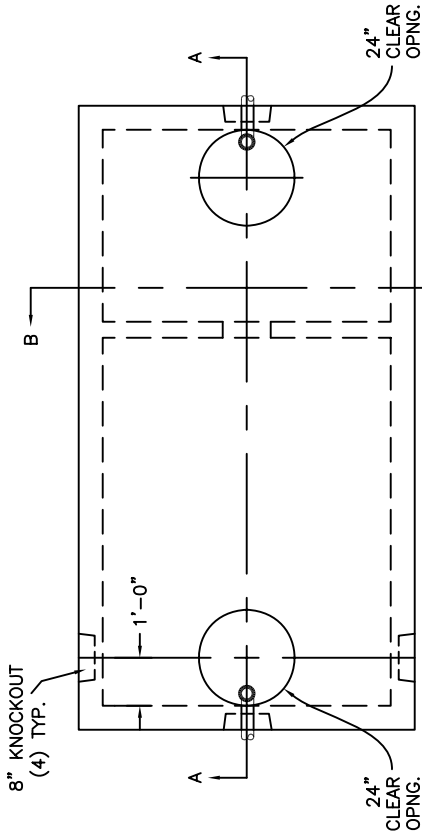
WEIGHT:  
TOP SECTION: 20,704 LBS.  
MID-SECTION: 11,935 LBS.  
BOTTOM SECTION: 22,000 LBS.  
TOTAL: 54,639 LBS.

PIPING: TEES, DROP LEGS & FITTINGS SUPPLIED AND INSTALLED BY G.C.

WATERTIGHT ASSEMBLY IS THE RESPONSIBILITY OF THE INSTALLING CONTRACTOR. ASK FOR KISTNER "WATERTIGHT JOINT INSTALLATION" DETAIL.

PIPE OPENINGS STOCK:

- PIPE SEALS REQUIRED
- 4" PVC – OPENING WITH SEAL – STOCK
- 6" PVC – OPENING STOCK – SEAL TO BE INSTALLED
- 8" PVC – OPENING STOCK – SEAL TO BE INSTALLED
- GROUDED OPENINGS ONLY – REQUIRED
- 4" PVC – OPENING WITH SEAL – STOCK
- 6" PVC – STOCK KNOCKOUT TO BE BROKEN OUT BY CONTRACTOR
- 8" PVC – STOCK KNOCKOUT TO BE BROKEN OUT BY CONTRACTOR



WATERTIGHT JOINT DETAIL  
SCALE: N/A

