



KISTNER CONCRETE PRODUCTS INC.
 8713 READ ROAD
 E. PEMBROKE, N.Y.
 14056
 (716) 894-2267

PRODUCT DESIGNATION

DWG. NO.

600 GALLON LEACHING CHAMBER

LC-LC600

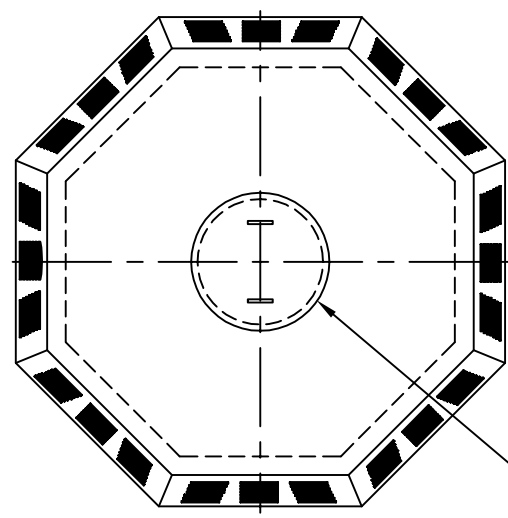


SPECIFICATIONS:

CONCRETE: 4,000 P.S.I. @ 28 DAYS.
 ENTRAINED AIR: 5% - 9%.
 STEEL: A.S.T.M. A496-A615
 GRADE 60-60 KSI.
 DESIGN LOADING: A-0.3/300PSF/WALKWAYS.
 FLOATION FORCES NOT ACCOUNTED FOR.

EFFECTIVE SIDEWALL ABSORPTION AREA- 70.58 SQ. FT.
 THEORETICAL GALLON CAPACITY-600 GALLON, INTERNAL VOLUME-91.46 CU.FT.

WEIGHT-3000 LBS.



20" DIA.
 CLEAR OPNG.

