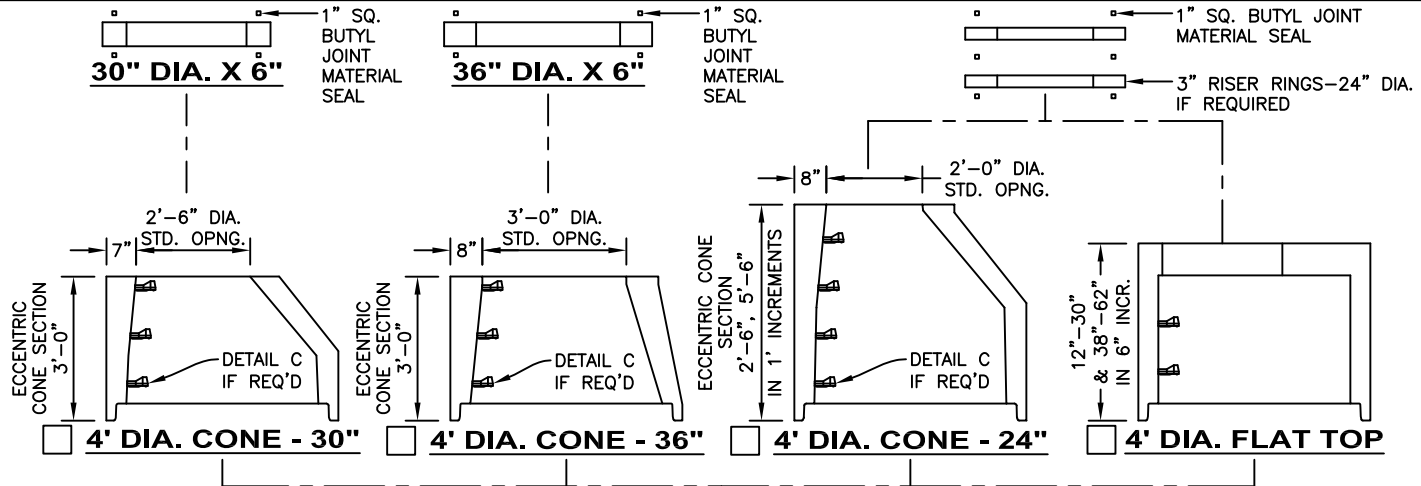




KISTNER CONCRETE PRODUCTS INC.
8713 READ ROAD
E. PEMBROKE, N.Y.
14056
(716) 894-2267

PRODUCT DESIGNATION
4'-0" DIA. LEACHING CHAMBER

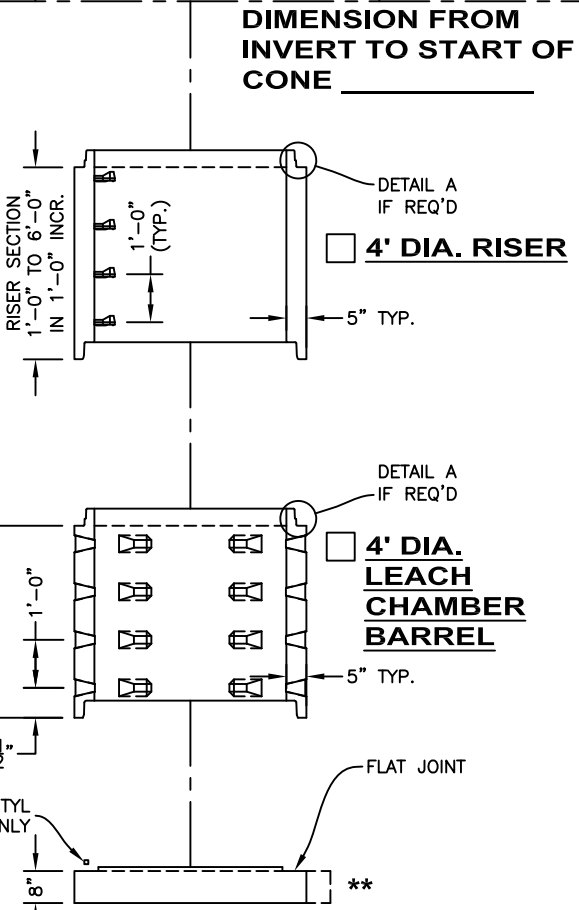
DWG. NO.
LC-LC4DIA ©
5/4/12



SPECIFICATIONS:
CONCRETE: 4000 P.S.I. @ 28 DAYS.
ENTRAINED AIR: 5% - 9%.
STEEL: A.S.T.M. A496-A615 GRADE 60-60 KSI.
DESIGN LOADING: A.A.S.H.T.O. HS-20-44 WITH 30% IMPACT AND EQUIVALENT SOIL PRESSURE OF 130 (PSF). FLOTATION FORCES NOT ACCOUNTED FOR.

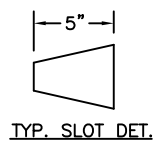
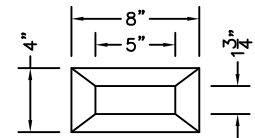
MANHOLE GENERAL NOTES:
 1. REINFORCED STEEL CONFORMS TO ASTM A185 SPEC. 0.12 in²/LF AND 0.12 in²/LF B/W IN BOT. SLAB.
 2. CONCRETE COMPRESSIVE STRENGTH 4,000 PSI. MINIMUM.
 3. MANHOLE DESIGN SPECIFICATIONS CONFORM TO LATEST ASTM C478 SPEC. FOR PRECAST REINFORCED CONCRETE MANHOLE SECTIONS.

LEACHING CHAMBER GENERAL NOTES:
 1. REINFORCED STEEL CONFORMS TO LATEST A.S.T.M. A185 SPEC. 0.12 SQ. IN./LINEAL FT. AND 0.12 SQ. IN. (BOTH WAYS) IN BASE SLAB.
 2. CONCRETE COMPRESSIVE STRENGTH -4000 PSI MINIMUM.
 3. MANHOLE DESIGN SPECIFICATIONS CONFORM TO LATEST A.S.T.M. C478 SPEC. FOR PRECAST REINFORCED CONCRETE MANHOLE SECTIONS.



FLAT TOP SLAB IS STEEL REINFORCED TO MEET OR EXCEED HS-20 LOADING.

- AVAILABLE OPENINGS**
- 24" DIA.
 - 24" SQ.
 - 30" DIA.
 - _____



PIPE OPENINGS BY CONTRACTOR IN FIELD.

- STANDARD BASE
- ** OPTIONAL FLANGE - 6" WIDE

STEPS IN SOLID RISERS ONLY.

