



KISTNER CONCRETE PRODUCTS INC.  
8713 READ ROAD  
E. PEMBROKE, N.Y.  
14056  
(716) 894-2267

PRODUCT DESIGNATION

4'-0" DIA.  
LEACHING CHAMBER

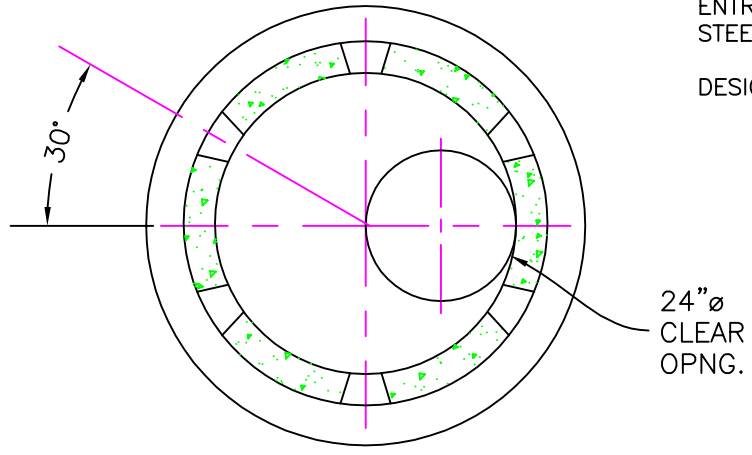
DWG. NO.

LC-LC4DIA ©

4-1-04

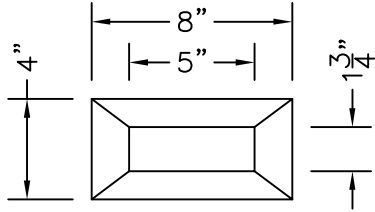
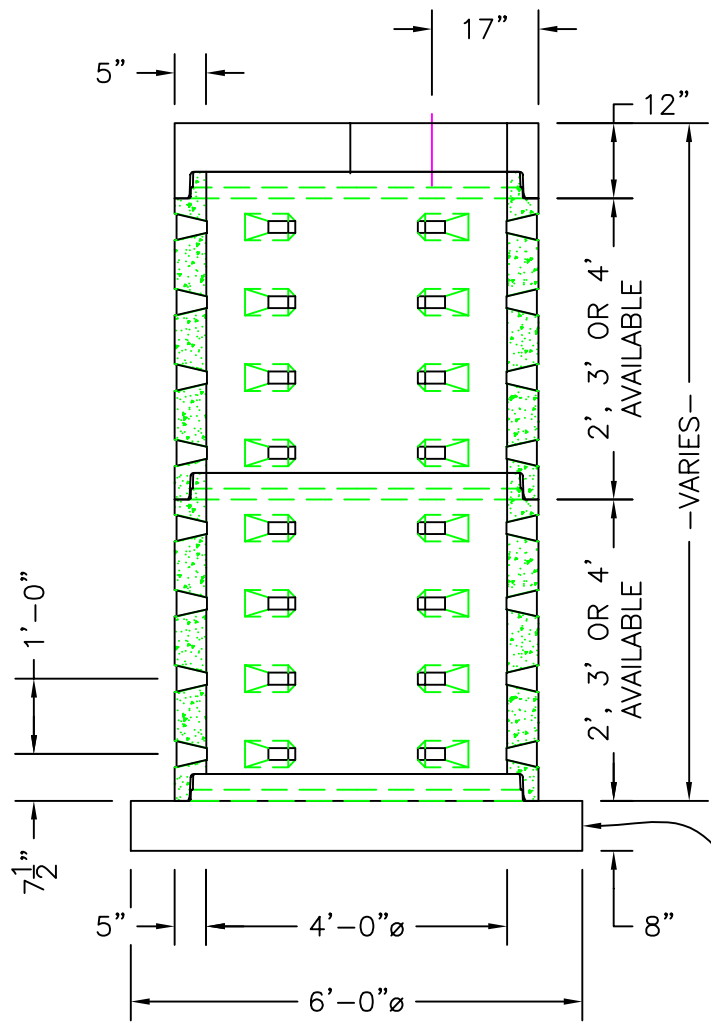
SPECIFICATIONS:

CONCRETE: 4000 P.S.I. @ 28 DAYS.  
ENTRAINED AIR: 5% - 9%.  
STEEL: A.S.T.M. A496-A615  
GRADE 60-60 KSI.  
DESIGN LOADING: A.A.S.H.T.O. HS-20-44  
WITH 30% IMPACT AND  
EQUIVALENT SOIL PRESSURE  
OF 130 (PSF). FLOTATION  
FORCES NOT ACCOUNTED FOR.



GENERAL NOTES:

1. REINFORCED STEEL CONFORMS TO LATEST A.S.T.M. A185 SPEC. 0.12 SQ. IN./LINEAL FT. AND 0.12 SQ. IN. (BOTH WAYS) IN BASE SLAB.
2. CONCRETE COMPRESSIVE STRENGTH -4000 PSI MINIMUM.
3. MANHOLE DESIGN SPECIFICATIONS CONFORM TO LATEST A.S.T.M. C478 SPEC. FOR PRE-CAST REINFORCED CONCRETE MANHOLE SECTIONS.



TYP. SLOT DET.

APPROX. WEIGHTS:  
BASE: 3400 LBS.  
BARREL: 798.35 LBS./FT.  
F.T.: 1800 LBS.

5'-10"  $\emptyset$   
SLAB X 8" THK.