



KISTNER CONCRETE PRODUCTS INC.
8713 READ ROAD
E. PEMBROKE, N.Y.
14056
(716) 894-2267

PRODUCT DESIGNATION

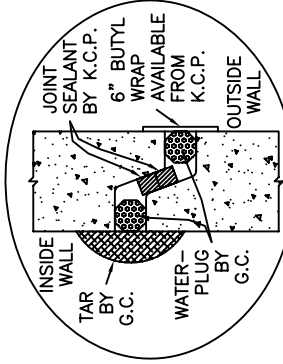
DWG. NO.

300 GALLON "K-SEP" GREASE INTERCEPTOR

GI-KSEP-GI300 ©
1-16-07

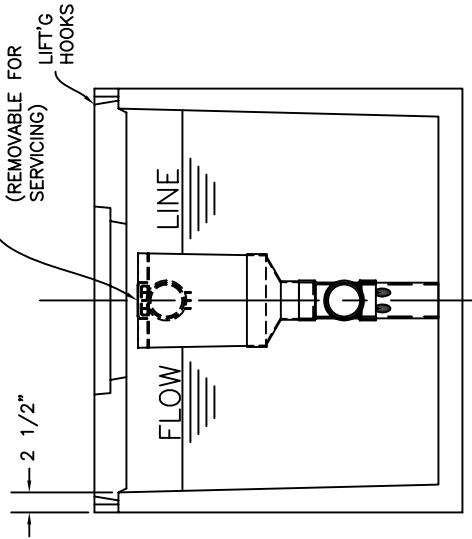
SPECIFICATIONS:
 CONCRETE: 4,000 P.S.I. @ 28 DAYS.
 ENRAINED AIR: 5% - 9%.
 STEEL: A.S.T.M. A496-A615 GRADE 60-60 KSI.
 DESIGN LOADING: A-0.3/300PSF/WALKWAYS. FLOTATION FORCES NOT ACCOUNTED FOR.
 PIPING: OUTLET TEES, DROP LEGS & FITTINGS SUPPLIED & INSTALLED BY CONTR. CONTR. TO DRILL MIN. 6-2" HOLES BELOW TEE FITTING STARTING 6" OFF FLOOR.
 FRAME & COVER & RISERS: SEE DWG. #ST-NTTKRRSR - "NON-TRAFFIC TANK RISERS".
 COVER OVER TANK: MAX. 3' OF EARTH FILL.

WEIGHT:
 TOP SECTION: 962 LBS.
 BOTTOM SECTION: 3,096 LBS.
 TOTAL: 4,058 LBS.

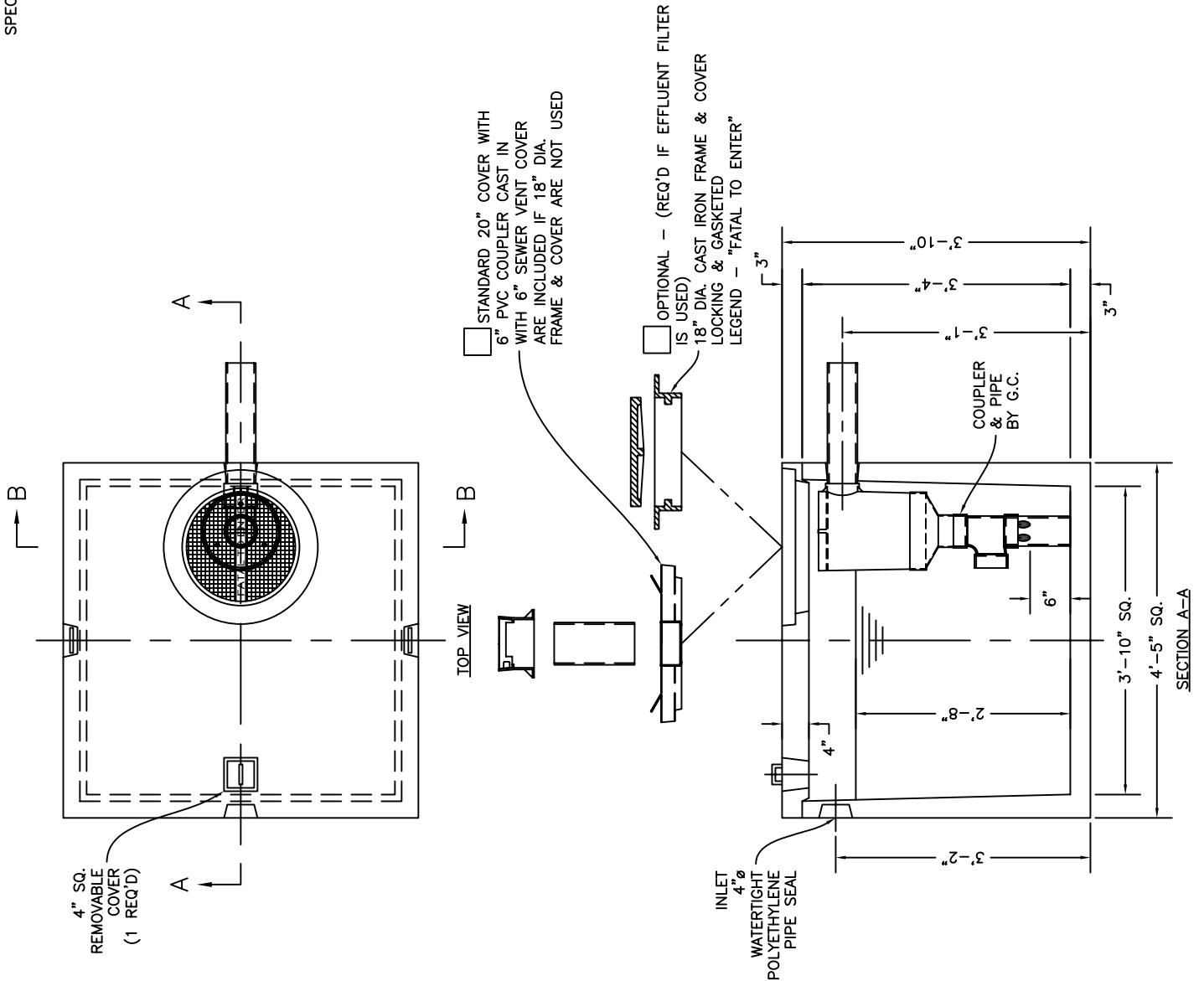


WATERTIGHT JOINT DETAIL
SCALE: N/A

OPTIONAL A300 TERTIARY EFFLUENT POLISHING FILTER WITH EXTENSION (REMOVABLE FOR SERVICING)
 LIFT'G HOOKS



SECTION B-B



4" SQ. REMOVABLE COVER (1 REQ'D)

TOP VIEW

STANDARD 20" COVER WITH 6" PVC COUPLER CAST IN WITH 6" SEWER VENT COVER ARE INCLUDED IF 18" DIA. FRAME & COVER ARE NOT USED

OPTIONAL - (REQ'D IF EFFLUENT FILTER IS USED)
 18" DIA. CAST IRON FRAME & COVER LOCKING & GASKETED
 LEGEND - "FATAL TO ENTER"

INLET 4" Ø WATERTIGHT POLYETHYLENE PIPE SEAL

SECTION A-A