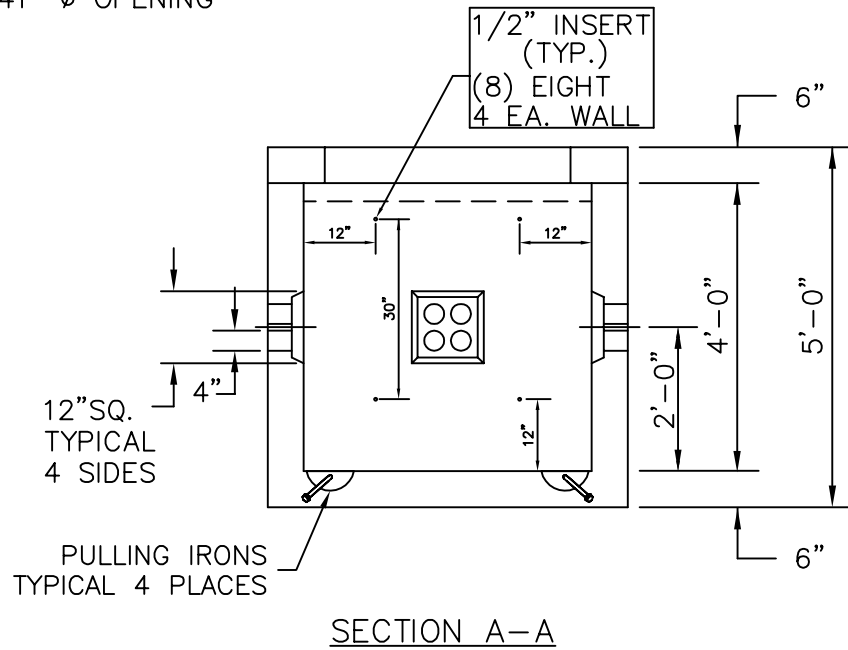
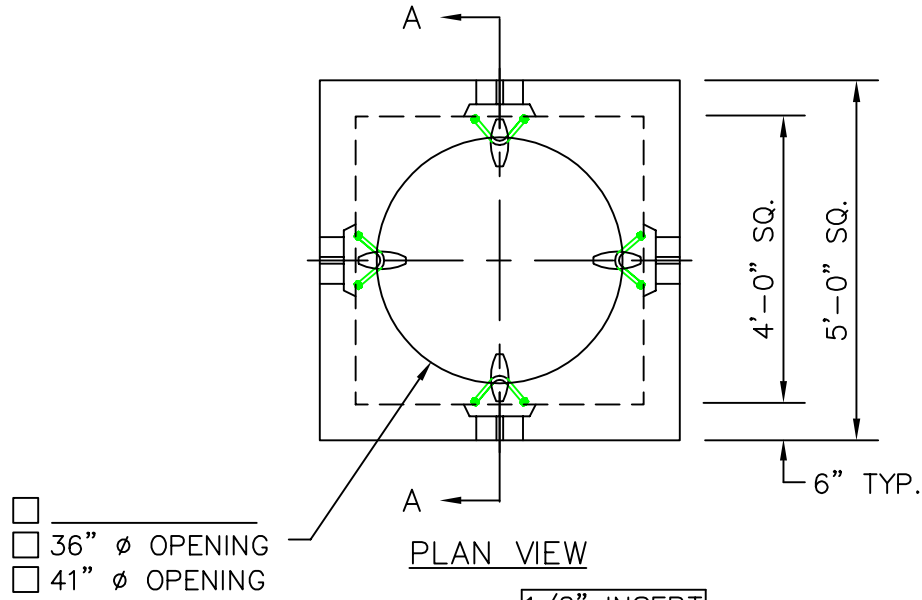




POWER/COMMUNICATION MANHOLE



SPECIFICATIONS:	
CONCRETE:	4000 P.S.I. @ 28 DAYS.
ENTRAINED AIR:	5% - 9%.
STEEL:	A.S.T.M. A496-A615 GRADE 60-60 KSI.
DESIGN LOADING:	A.A.S.H.T.O. HS-20-44 WITH 30% IMPACT AND EQUIVALENT SOIL PRESSURE OF 130 (PSF). FLOATATION FORCES NOT ACCOUNTED FOR.
WEIGHT:	
TOP SECTION:	1,076 LBS.
BOTTOM SECTION:	7,185 LBS.
TOTAL:	8,261 LBS.