



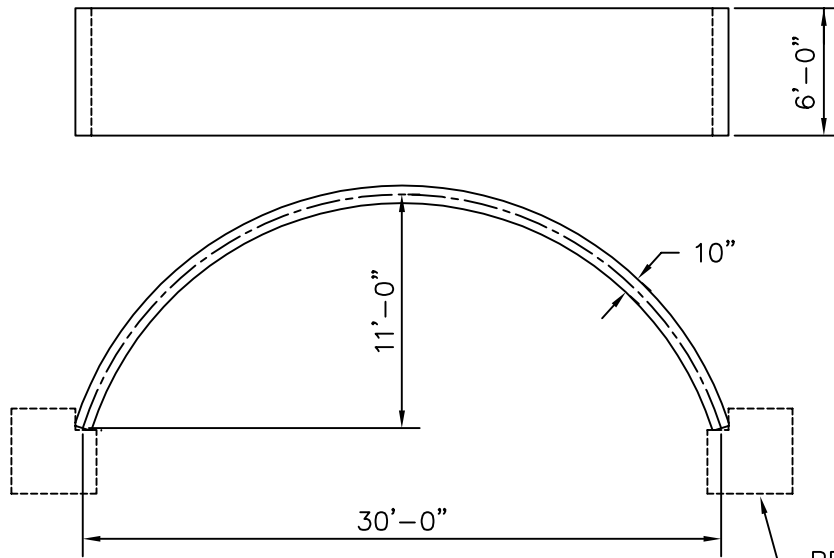
KISTNER CONCRETE PRODUCTS INC.
8713 READ ROAD
E. PEMBROKE, N.Y.
14056
(716) 894-2267

PRODUCT DESIGNATION

DWG. NO.

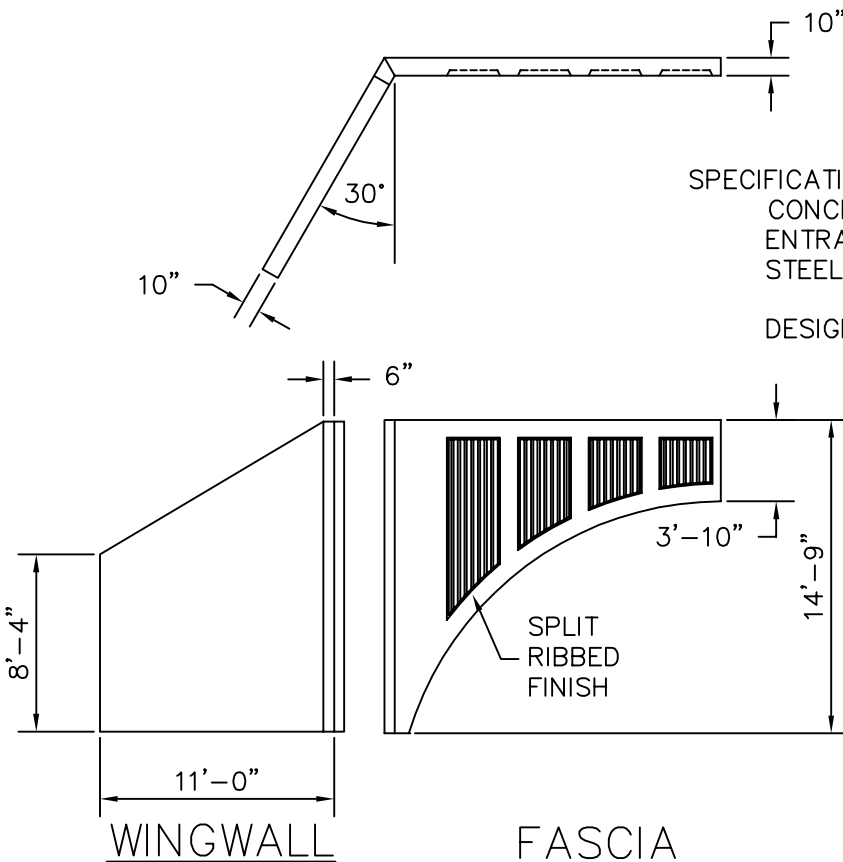
ARCH BRIDGE 30'-0" SPAN

AB-30



ARCHES

ARCH SPAN (ft.)	WATER DEPTH / AVERAGE WATERWAY AREA (ft.)				
30	2/54	4/103	6/145	8/180	10/204



SPECIFICATIONS:

CONCRETE:
ENTRAINED AIR:
STEEL:

5000 P.S.I. @ 28 DAYS

5% - 9%

A.S.T.M. A496-A615

GRADE 60-60 KSI.

DESIGN LOADING:

A.A.S.H.T.O. HS-20-44

WITH 30% IMPACT AND

EQUIVALENT SOIL PRESSURE OF 130 (PSI).