



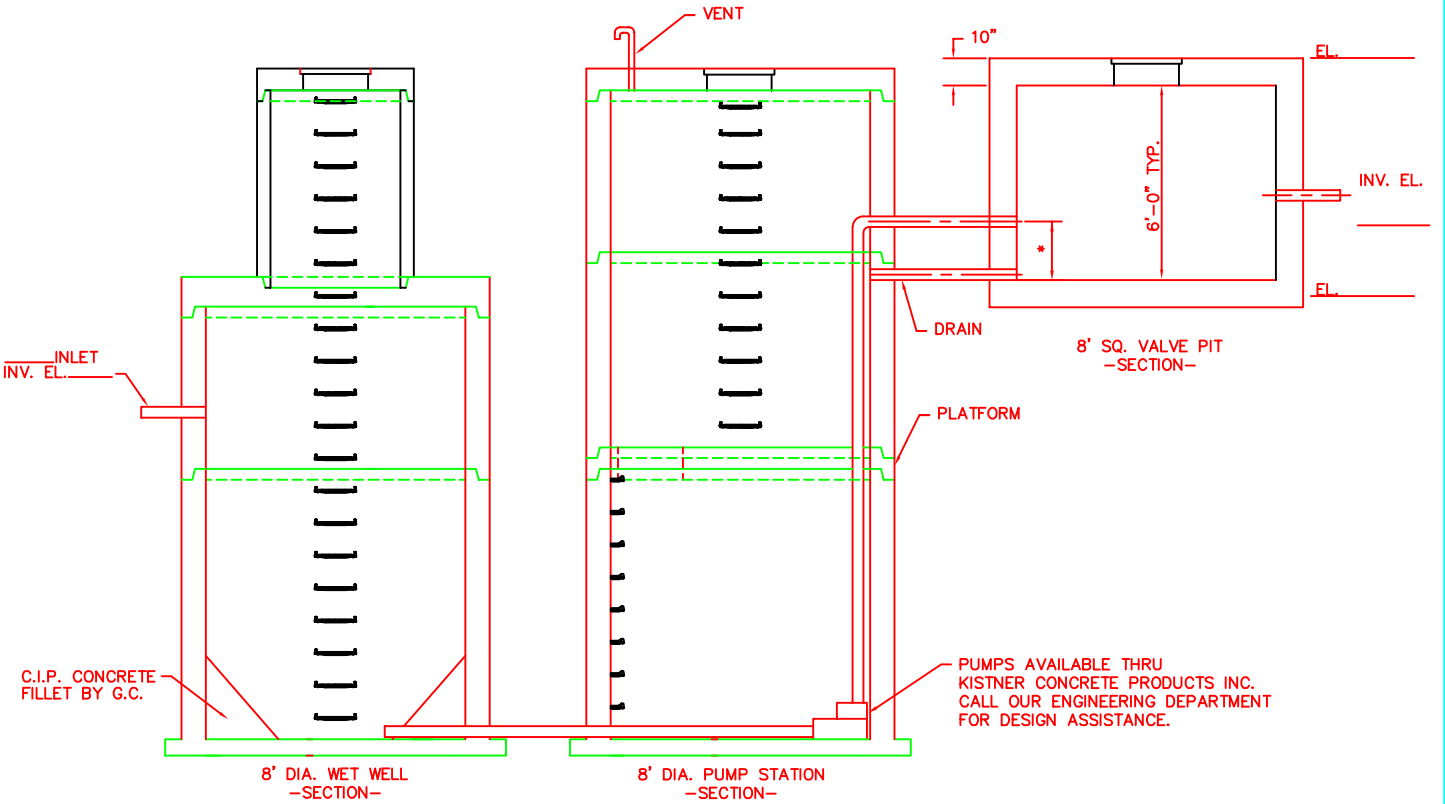
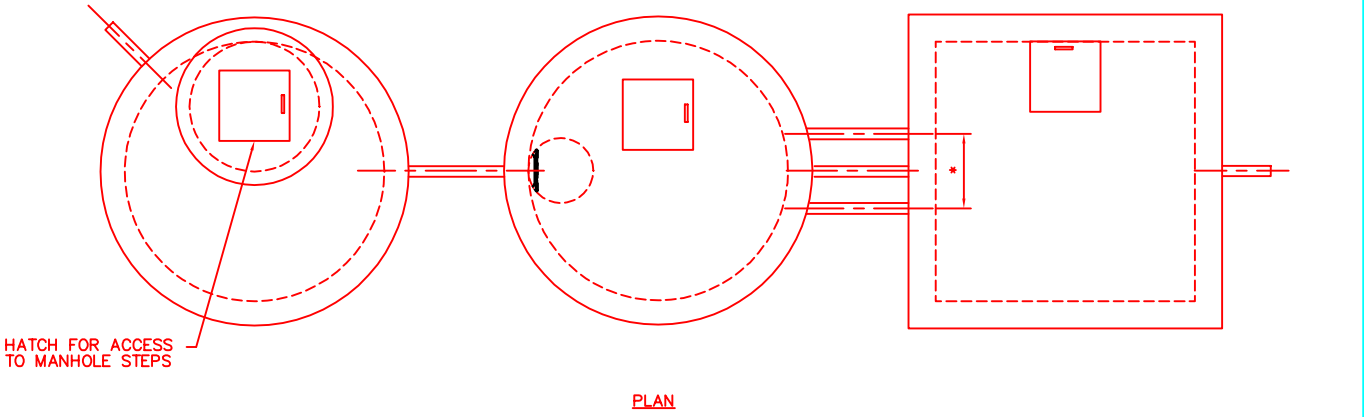
KISTNER CONCRETE PRODUCTS INC.  
 8713 READ ROAD  
 E. PEMBROKE, N.Y.  
 14056  
 (716) 894-2267

# PRODUCT DESIGNATION

8' DIA. WET WELL, 8' DIA. LIFT STATION,  
 AND 8' SQ. VALVE PIT

# DWG. NO.

LS-8-WW-LS-VP



**SPECIFICATIONS:**

1. FOR ROUND STRUCTURES SEE THE MANHOLE SECTION FOR PIECE SIZES AND SPECIFICATIONS.
2. FOR SQUARE AND RECTANGULAR STRUCTURES SEE THE SQUARE AND RECTANGULAR STRUCTURES SECTION FOR SPECIFICATIONS.