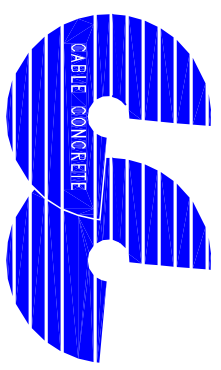
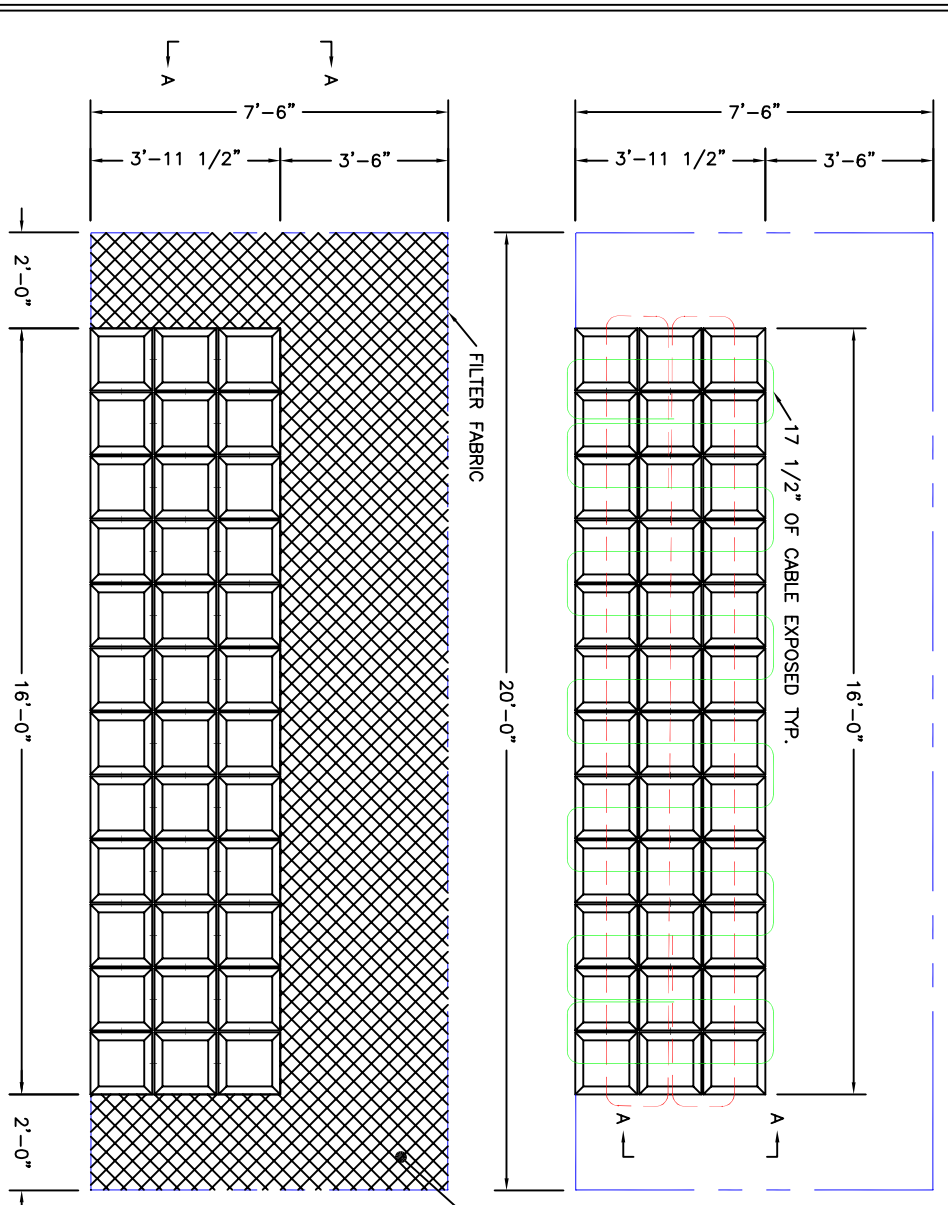


SPECIFICATIONS:
 CONCRETE: 4,000 P.S.I. @ 28 DAYS.
 ENTRAINED AIR: 5% - 9%
 DIMENSIONS: NOMINAL 1 1/2".
 CABLE: STAINLESS STEEL
 AIRCRAFT CABLE TYPE 302
 TYPE 1 X 19 CONSTRUCTION
 SIZE AS SPECIFIED IN TABLE.

TRUCK LOADS:
 NON-PERMITTED PERMITTED
 48,000 LBS. 66,000 LBS.
 18 MATS 25 MATS
 15 MATS 13 MATS
 9 MATS

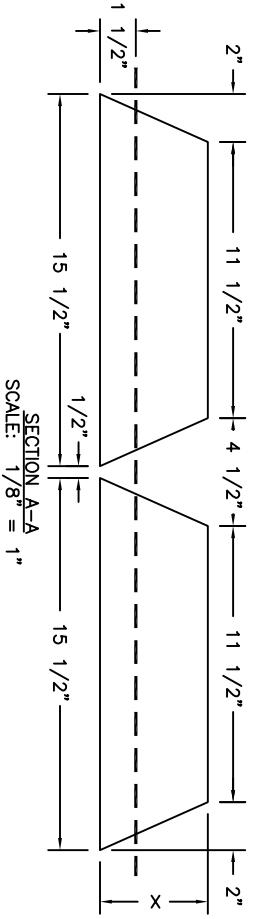
CC-35: 18 MATS
 CC-45: 25 MATS
 CC-70: 13 MATS

GEOTEXTILE NONWOVEN NEEDLEPUNCHED
 8 OZ. MATERIAL PER N.Y.S.D.O.T.
 SIZE "L" 210" X "W" 66"



WT./S.F.	LENGTH	WIDTH	SQ. FT./MAT	BLOCKS				SPACING				BLOCK WT. (LBS.)	BLOCKS PER MAT	MAT WT. (LBS.)
				BASE WIDTH	TOP WIDTH	THICKNESS X	BASE	TOP	WT. (LBS.)	BLOCKS				
CC35	16'-0"	4'-0"	64	15 1/2"	11 1/2"	1/2"	4.5"	0.5"	4.5"	70	36	2531		
CC45	16'-0"	4'-0"	64	15 1/2"	11 1/2"	1/2"	5.5"	0.5"	4.5"	86	36	3094		
CC70	16'-0"	4'-0"	64	15 1/2"	11 1/2"	1/2"	8.5"	0.5"	4.5"	133	36	4781		

WT./S.F.	DIA.	CONSTR.	STRENGTH	PRODUCT WIDTH		PRODUCT LENGTH				
				LENGTH	WIDTH	LENGTH	WIDTH			
CC35	0.125"/1/8"	1 X 19	2100	72'-3"	3/4"	0.156"/5/32"	1 X 19	3300	80'-9"	9/16"
CC45	0.125"/1/8"	1 X 19	2100	72'-3"	3/4"	0.156"/5/32"	1 X 19	3300	80'-9"	9/16"
CC70	0.188"/3/16"	1 X 19	2800	72'-3"	3/4"	0.188"/3/16"	1 X 19	4200	80'-9"	9/16"



SECTION A-A
 SCALE: 1/8" = 1"

PROPRIETARY INFORMATION - ALL RIGHTS OF KISTNER CONCRETE PRODUCTS, INC.

REVISIONS	
3-2-94	
4-18-94	
5-3-94	
12-10-94	
1-23-95	
4-16-96	
3-15-97	
8-3-99	

PROJECT: _____

LOCATION: _____

OWNER: _____

ENGINEER: _____

CONTRACTOR: _____

MANUFACTURER: KISTNER CONCRETE PRODUCTS, INC.

PRODUCT DESIGNATION: CABLE CONCRETE PRECAST EROSION CONTROL SYSTEM

SCALE: 1/4" = 1' **DRAWN BY:** DAR **DATE:** 6-3-93 **DWG. NO.:** CC-CBLCONC

DESIGNED BY: CJC **CHECK 1:** DAR **CHECK 2:** _____